

Q3 Newsletter | September 2022

# Features

# Contents



## 03 | Message from our Managing Director

As I write this, the new Ministerial responsibilities at the Department for Environment, Food and Rural Affairs (Defra) are still to be fully confirmed. With the focus of the new Prime Minister's government on encouraging growth through cutting tax and regulations, producers and schemes will be watching with interest to see whether any of the current plans and timetables for changes to producer compliance are impacted.

As a reminder we have been expecting:

**Packaging EPR** – new system – transferring a much greater basket of costs to producers (legislation in 2023, implementation in 2024 and 2025);

**WEEE** – amendments to current system - expected to require doorstep collection of WEEE to be funded by producers (consultation later in 2022, implementation in 2025);

**Batteries** – revised system – expected to address the current over-reliance on portable lead-acid batteries for UK compliance and potentially, to require doorstep collection of batteries to be funded by producers (consultation in summer 2023, implementation in 2025 at the earliest).

These timetables had already slipped – and with many policy decisions having effectively been on hold over the past few months it is now widely expected that they will again.

ERP will continue to monitor these and other related developments and will, of course, bring you updates in future editions of The Circular, or through specific communications.

We always value feedback from our customers. Thank you to all those who took the time to complete Landbell Group's Voice of the Customer survey in June – we now have the results and were very pleased to see such high levels of satisfaction with ERP UK's service and support. We had particularly strong scores for the ease of dealing with us and the knowledge and helpfulness of our people – so a particular thanks to all of my customer-facing colleagues.

ERP supporting the fight against human trafficking



## Anti-Slavery Week 2022

17th-23rd October 2022



Shining The Spotlight on  
the Hidden

Victims of modern slavery are hidden in plain sight, in our cities and our communities. You can help them by getting involved in Anti-Slavery Week 2022.

Visit [Hope for Justice](https://www.hopeforjustice.org)





## 04 | Member news



### Data Rounds - WEEE & Battery

Q3 2022 B2C EEE and battery weight data will be due by 14th October 2022.

We would like to kindly ask Members to:

- Ensure that all EEE and batteries made available to the UK market is reported in the relevant reporting periods (see table below);
- Have submissions approved by a legal signatory of the company or

delegated authority who has prior written consent for 2022, and

- If prompted by our system when inputting data, please account for any significant fluctuations in data by including a brief explanation within the data submission. The Environmental Agency monitors producer data, including making comparisons against the data from the same period of the previous year.

### WEEE and Battery Annual Registrations for 2023

WEEE and Battery scheme members must register for 2023 by the end of October for batteries and end of November for WEEE.

As such, the ERP UK Compliance Team will be working hard over the next few months to ensure members are registered by the legal deadlines.

We will request that members confirm their registration details by returning their confirmation of company details documents to their Compliance Account Manager. We would appreciate members completing this as soon as possible.

Reporting Periods	Reporting Deadlines
Q1: 1st January to 31st March	Thursday 15th April 2021
Q2: 1st April to 30th June	Thursday 15th July 2021
Q3: 1st July to 30th September	Friday 14th October 2022
Q4: 1st October to 31st October	Friday 14th January 2022
2021 B2B EEE: 1st Jan to 31st December	Friday 14th January 2022





## 05 | Member news



### **EPR is coming...** *For EPR think ERP!*

#### **What is “EPR”?**

“EPR” is an abbreviation of the phrase “Extended Producer Responsibility” and is an extension of the current “Producer Responsibility” Regulations that govern Waste Electrical and Electronic Equipment, Waste Batteries and Accumulators, and Packaging Waste.

EPR will fundamentally transform the Producer Responsibility landscape with respect to the Packaging Waste Regulations and also affect the WEEE and Waste Batteries and Accumulators Regulations in the future as well. The principle of EPR is to extend the full net costs of the collection, sorting, treatment, and ultimately recycling of waste to the Producer of that waste.

#### **Will I be affected by EPR?**

If you are currently a Producer under

the Packaging Waste Regulations, WEEE Regulations and/or the Waste Batteries and Accumulators Regulations, then you will be affected by EPR. In the first phase of EPR implementation, all current Packaging Producers will be affected in some way by the new legislation. Also, some companies that have been previously unaffected by the Packaging Waste Regulations (due to being below the current thresholds of £2 million annual turnover and placing less than 50 tonnes of packaging onto the UK market) will also become affected for the first time. This is because the current Packaging Waste Regulations exempt entities under the two thresholds from being required to comply with the current Regulations. Whilst these two thresholds will remain under the new EPR for Packaging Regulations, a new “Small Producer” definition will exist for Producers with more than £1 million annual turnover and that handle more than 25 tonnes of packaging. Producers meeting the new “Small

Producer” thresholds will be required to report on the packaging that they place onto the UK market. If you are currently not complying with the Packaging Waste Regulations and believe that you will meet the new “Small Producer” thresholds (£1 million+ annual turnover and placing more than 25 tonnes of packaging onto the UK market), please contact us for further advice, help and support.

#### **When will EPR for Packaging be implemented?**

EPR for Packaging will be launched in a phased approach from 2023, with the new full legislation coming into force for the start of 2024. Therefore, it has now been confirmed that Packaging Producers will have to submit packaging data in a brand new format for the new Regulations during 2023.

(cont. next page)





## 06 | Member news

### What will be the impacts of EPR for Packaging?

There are many impacts of the new EPR for Packaging Regulations, which are summarised here:

There will be a new “single point of compliance” for packaging, which will completely transform the current Packaging Waste Regulations away from the current “shared Producer Responsibility” approach and the use of the “packaging chain” for reporting.

There will be a new requirement on separating out household packaging from non-household packaging. Household packaging waste will be managed via a new body called the “Scheme Administrator”, which will have sole authority with respect to household packaging waste. Non-household packaging waste will be captured via Packaging Compliance Schemes. Packaging Obligations will be met initially via the PRN system, which will continue as an interim solution.

Data Reporting will change from annual to bi-annual. The first submission of bi-annual packaging data will be required by 1st October 2023, based on packaging handled from 1st January to 30th June.

There will be an additional data reporting element for Producers with respect to “Nation Data”. Producers will be required to break down the UK

packaging data that is normally reported to the Agencies into the 4 Nations of the UK (i.e. England, Scotland, Wales and Northern Ireland).

**For Year 1, 2023 packaging data, split by UK Nation, will need to be reported by December 2024.**

Although the current PRN system is scheduled to continue until at least 2026/2027, Producers handling household packaging will also have to start paying additional costs on top of PRN charges in order to pay for the collection, treatment and recycling of packaging from households.

**Mandatory labelling requirements will also be introduced in the new Regulations.** Producers will be required to label packaging using the “Recycle Now” trademarks (“Recycle” / Do Not Recycle”).

**Compliance costs under the new Regulations will increase significantly.**

With EPR being the most significant shake-up of the Producer Responsibility system in over 20 years, Producers will need access to timely updates and guidance to achieve a smooth EPR transition. Please don't forget that ERP UK are always here to help you.

An easy way to remember this is: “For EPR, think ERP!”



### Packaging PRN Market Update for Q3 2022

In August, we provided packaging members with Q3 2022 PRN market update to provide some important information on the current state of the PRN market.

If any packaging members have not received our recent market update or would like to discuss PRNs in more detail, please contact your Compliance Account Manager.

If you are currently not complying with the Packaging Waste Regulations and believe that you will meet the new “Small Producer” thresholds (£1 million+ annual turnover and placing more than 25 tonnes of packaging onto the UK market), please contact us for further advice, help and support.

Alternatively, please email: [ukcompliance@erp-recycling.org](mailto:ukcompliance@erp-recycling.org)





## 07 | Industry news



### Packaging non-compliance – enforcement undertakings

In the summer, the Environment Agency published a list of enforcement undertakings it accepted between January and May 2022, which included over £57,000 from businesses that had failed to register under the Packaging Waste Regulations.

Enforcement undertakings can be used by businesses that are in breach of regulations, allowing them to make a charitable donation instead of being prosecuted.

If your business is not registered for packaging, we would encourage you to check if you are obligated. You will need to meet the following criteria to be obligated to register for packaging:

- Turnover of more than £2 million in your latest set of filed accounts
- Handle more than 50 tonnes of packaging in the previous year

- Have a UK presence (e.g. an office or warehouse)

With the upcoming EPR changes to the packaging regulations, it is a good time to review as, under EPR, more businesses will need to register due to the new Small Producer threshold (turnover of £1 – 2 million and handle more than 25 tonnes of packaging). If you are unsure whether your company needs to register, please contact your Account Manager.



### Material Focus: Disposal of business waste

In 2019, businesses (including offices, house builders and residential landlords) bought up to 484,000 tonnes of electricals (such as phones, IT equipment, dishwashers and washing machines), which was almost 30% of the total electricals sold in 2019.

Material Focus commissioned Eunomia, an environmental consultancy, to research how business WEEE was being disposed of.

At least 108,000 tonnes of business WEEE was recycled through an Ap-proved Authorised Treatment Facility (AATF). AATFs are accredited by the Environment Agency and are able to issue evidence notes once WEEE has been recycled. Any B2C evidence can then be used towards meeting the UK’s household WEEE collection targets.

However, the research suggests even more WEEE arising through businesses was disposed of through other routes, including:

- 200,000 tonnes thrown into general waste
- 29,000 tonnes “illegally exported”
- 5,000 tonnes fly-tipped

This research shows that more needs to be done to help businesses dispose of their WEEE through the correct channels. Ideally, WEEE would be reused and where this is not possible, WEEE should be sent to an AATF for recycling so that any B2C evidence can support the WEEE collection targets.

More information can be found [here](#):





## 08 | Industry news



### Raising awareness of battery fires

If batteries, or electricals containing batteries, end up inside bins or recycling lorries with other materials then they may be crushed in the collection vehicle or at treatment facilities. This increases the chances that they could be punctured which can cause lithium batteries to self-combust, setting fire to materials around them.

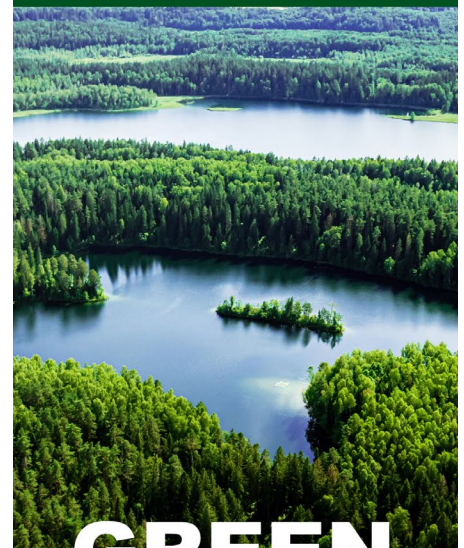
New research conducted by Material Focus amongst local authorities across the UK has identified that over 600 fires in waste trucks and sites were caused by batteries that had not been removed from electricals.

The findings of the research indicate that there are three times more fires caused by batteries in the waste stream than previously reported, highlighting the significance of the issue. The research surveyed 58 UK local authorities with nearly 90% of these saying that fires caused by batteries are an increasing problem.

40% of householders are unaware of any information regarding how they should safely recycle their batteries. In response to this, Material Focus is launching the 'Stop Battery Fires' Campaign to raise awareness of the simple actions that householders can take to reduce fires.

Scott Butler, Executive Director of Material Focus said: *"People should never bin their electricals or their portable batteries. If they can, they should remove any hidden batteries from their electricals and recycle the batteries and electricals separately. If they cannot remove the batteries, then they should recycle their electricals separately as always."*

ERP proudly supporting aspiring circular economy innovators



## GREEN ALLEY AWARD

Register now  
& stand the chance of winning  
**€25,000**

Visit the **website**

LANDBELL GROUP  
[www.landbell-group.com/](http://www.landbell-group.com/)







## 09 | Compliance data

### WEEE

The latest data (Q2 2022 UK national data from the EA)

#### Volumes of EEE placed on the market (POM)

As the table below demonstrates, there was a clear reduction of EEE placed onto the UK market across more or less all categories in Q2 2022, when comparing against the same period last year (Q2 2021). This is obvious in the table below:

	Category	UK B2C EEE placed on the UK Market (tonnes)	Variance (Q1 2022 vs Q1 2021)	% Variance
1	Large Household Appliances	128,839	-31,798	-20%
2	Small Household Appliances	35,615	-6,996	-16%
3	IT and Telcomms Equipment	16,428	-2,902	-15%
4	Consumer Equipment	6,692	-898	-12%
5	Lighting Equipment	12,187	-2,970	-20%
6	Electrical and Electronic Tools	21,400	-6,015	-22%
7	Toys Leisure and Sports	10,383	-6,463	-38%
8	Medical Devices	990	-170	-15%
9	Monitor and Control Instruments	5,369	-1,130	-17%
10	Automatic Dispensers	70	5	8%
11	Display Equipment	22,060	-213	-1%
12	Cooling Appliances	48,257	-10,879	-18%
13	Gas Discharge Lamps/ LED	1,313	-202	-13%
14	Photovoltaic Panels	24,881	16,987	215%
	<b>Total</b>	<b>334,545</b>	<b>-53,644</b>	<b>-14%</b>

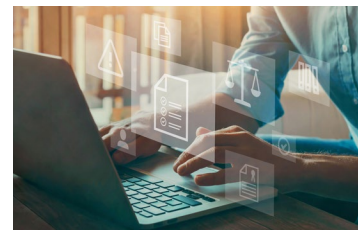


## WEEE & Batteries Workshop (London)

2023  
Find out more today!

WEEE & Battery regulations  
Your obligations as a Producer  
Your current obligations as a distributor  
Updates on any consultations  
Information required to be communicated to customers  
Data collection and reporting

Limited availability, book today



## 10 | Compliance data

### Volumes of EEE placed on the market (POM) cont.

Similar to Q1 2022 data, it appears that only PV panels recorded an increase in POM compared to the same period in 2021, with some categories, including LDA (Cat 1), SHA (Cat 2), Tools (Cat 6), Toys (Cat 7) and Cooling (Cat 12), with over 20% decrease from the same time last year (Q2 2021).

### Volumes of WEEE collected (see table opposite)

Q2 2022 data indicates a 10% decrease of total volume of WEEE collected when compared to the same period last year. In fact, with the exception of Q2 2020 when Covid-19 lockdowns halved collections, Q2 2022 is the lowest Q2 WEEE collected tonnage since 2009. As the table demonstrates below, Large Household Appliance collections were especially much lower than this time last year (-17%), but all other streams are also well down from Q2 2021.

### Outlook for the compliance year

Looking at the Q2 volumes against the targets for 2022 shows most streams are falling short – with only display volumes ahead.

Category	UK B2C WEEE Collected - (tonnes)	Variance (Q1 2022 vs Q1 2021)	Variance (%)
Large Household Appliances	39,012	-8,076	-17%
Cooling	32,950	-2,960	-8%
Display	9,764	-541	-5%
Cats 2-10 SMW	32,437	-1,415	-4%
Lamps	963	-51	-5%
PV	59	-4	-6%
<b>TOTAL</b>	<b>115,185</b>	<b>-13,047</b>	<b>-10%</b>

Category	Q1 2022 UK WEEE collected	2022 DEFRA targets	Progress to targets %
LDA	84,691	183,867	46%
Cooling	64,925	146,275	44%
Display	20,365	39,705	51%
Cats 2-10 SMW	63,950	137,130	47%
Lamps	1,996	4,145	48%
PVP	109	254	-43%
<b>TOTAL</b>	<b>236,037</b>	<b>511,376</b>	<b>46%</b>



## 11 | Compliance data

### Batteries

The latest data (Q2 2022 UK national data from the EA)

#### Volumes of Portable Batteries placed on the market (POM)

Q2 saw a slightly lower (935 tonnes, -11%) volume of portable batteries placed on the market from this time last year

	Portable Batteries Placed on the Market		
	Q2 2021 (tonnes)	Q2 2022 (tonnes)	Variance
Lead Acid	332	323	-3%
NiCd	46	52	12%
Others	8,177	7,245	-11%
<b>TOTAL</b>	<b>8,556</b>	<b>7,620</b>	<b>-11%</b>

#### Volumes of waste batteries collected

The Q2 2022 data shows a decrease from this time last year (Q2 2021), but still the 2nd highest ever volume of waste portable batteries collected in Q2.

	Portable Batteries Placed on the Market		
	Q2 2021 (tonnes)	Q2 2022 (tonnes)	Variance
Lead Acid	3,802	3,228	-15%
NiCd	68	138	104%
Others	1,084	870	-20%
<b>TOTAL</b>	<b>4,953</b>	<b>4,236</b>	<b>-14%</b>

#### Outlook for the compliance year

Based on the Q2 2022 data, the UK collection rate for 2022 (to date) is 29%, which is 65% progress towards to the 2022 target of 45%.



#### Plastic Packaging Tax

The tax came into force on 1st April 2022 and is charged at a rate of £200 per tonne for plastic packaging produced in or imported into the UK that does not contain at least 30% recycled plastic, returns are due quarterly with the next return due on or before the 28th October 2022.

ERP's Account Managers have been in touch with customers we believe will be impacted by the new tax to ensure they are aware of the details.

Businesses which either manufacture or import plastic packaging components should also carry out their own due diligence checks in respect of Plastic Packaging Tax.

If you have any questions about the plastic packaging tax, and how it will affect your company, please contact your Account Manager directly or the Data Services team at [ukdataservices@erp-recycling.org](mailto:ukdataservices@erp-recycling.org)

For the latest HMRC guidance on the tax please follow the [link](#).





## 12 | Compliance data

### Packaging

This year is shaping up to become one of the more turbulent years for the packaging market. In our last issue of The Circular in June, we commented on the downwards trend of recycling when comparing Q1 2021 performance with Q1, 2022. The last set of recycling data published by the Environment Agency in July has only confirmed this trend. Comparing recycling levels for the first six months of the year to this time last year we can see a dip in all materials:

There are now concerns that increases in energy costs may also impact and depress recycling levels, and that a drop of packaging consumption due to the cost-of-living crises may amplify the problem. Steady packaging material throughput and continuous

recycling is going to be key to making sure we generate sufficient PRNs to meet the UK's compliance needs. Whilst a lack of packaging volume available for recycling is always a concern, the PRN system has a good track record for stimulating volume through improved PRN revenues.

Overall, the UK is making reasonable progress towards meeting its 2022 requirements. However, we need to maintain the current flow of packaging material through the system to ensure we are heading towards compliance. This means that high PRNs prices are set to remain to stimulate supply.



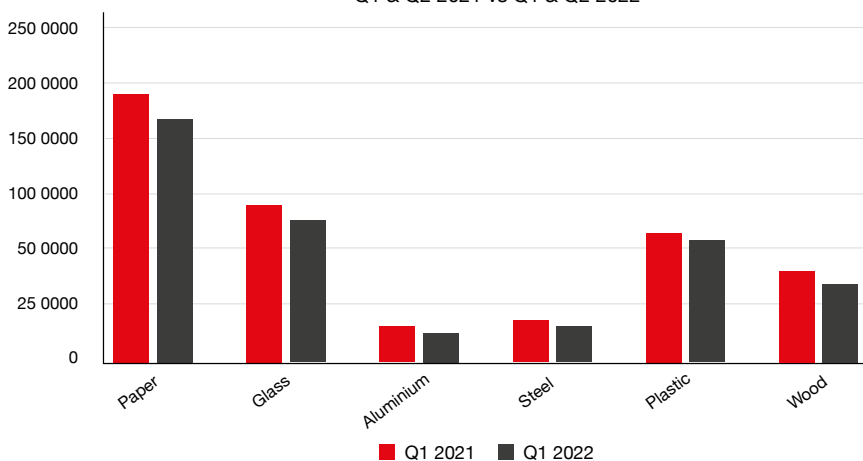
### Packaging Data Collection

Data collection exercises are already well underway for this year, with several new data collection exercises commencing each week, account managers may be in contact to discuss specific details.

Any support you can provide with this activity will be greatly appreciated.

As you might be aware, we collect data at a granular level which includes packaging components, polymer types, recycled content percentages and recyclability. The reason we collect this detailed information is to future proof the service for the introduction of Packaging EPR over the next few years.

Q1 & Q2 2021 vs Q1 & Q2 2022





## 13 | Featured article:



### School pupils in Wales win vouchers by competing in a battery recycling competition

Sponsored by ERP UK, Merthyr County Borough Council organised a free battery recycling competition for their schools.

Schools that signed up were provided with a free ERP battery box and competed to collect as many domestic batteries as possible, including standard AA and AAA nickel-cadmium batteries, button cell batteries, power packs from tools, and mobile phone and laptop batteries.

Heolgerrig Community Primary School in Merthyr Tydfil was the competition winner and received £200 in vouchers after collecting an impressive 50kg of batteries – congratulations to them for their efforts!

Joint second place went to Gwaunfarren Primary School and Edwardsville Primary School for collecting 35kg of batteries, and they received £100 each in vouchers. Third place was awarded to Ysgol Rhyd y Grug for collecting 10kg of batteries and they received £50 in vouchers.

The battery recycling competition has been running for several years now, making a positive difference in protecting the environment and educating young people about the importance of recycling batteries.



## Packaging Workshop

(London)

2023

Find out more today!

Your obligations as a Producer  
Updates on any consultations  
Packaging EPR reforms and the impact  
this will have on you and your business  
Information required to be communicated  
to customers  
Data collection and reporting

Limited availability, book today



## 14 | Meet a team member: Radhika Rughani



### Q How long have you been with ERP UK?

A I have been with ERP since the beginning of August. Everyone has made me feel so welcome and helped me settle in well.

### Q Tell us about your experience before joining the ERP team?

A Before starting at ERP UK, I was working for a Housing Association as a Customer Service Advisor. I was the first point of contact to all our customers who were shared-ownership, Market rent, and rent customers. My role consisted of various tasks throughout the day, answering inbound and outbound calls constantly, ensuring the enquiries email inbox is up to date as well as Web chat and Twitter.

### Q What does a typical day look like for you?

A In my role as Compliance Account Manager, I will be providing effective and efficient delivery of WEEE, Packaging, and Battery compliance services to ERP customers, as well as maintaining Membership services, supporting ERP to retain existing customers and attracting new customers. I have gained access to my own accounts, and I look forward to continuing my progress at ERP. I recently went on an exciting trip to Mainz in Germany for an introduction to the company and it was lovely to meet everyone.

### Q What motivates you in your role?

A I have been in a customer service role throughout my working life, and I love being able to help customers. I like being able to make a difference and help them have an easy and enjoyable experience. Offering good customer service is important to me so that I retain customers and help grow the business.

### Q What do you enjoy doing outside work?

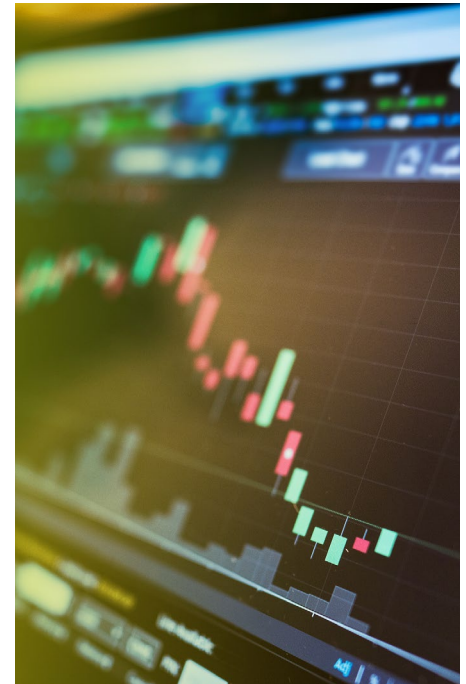
A I enjoy going to the gym, cooking and reading.

### Q Your favourite music band(s)?

A I like all genres of music.

### Q Favourite holiday destinations?

A Anywhere that is hot and has a beach.

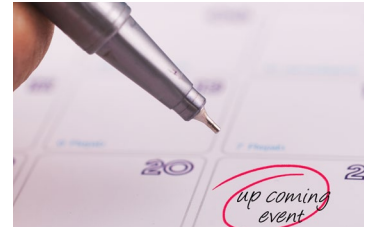


## ERP's DataView Platform Going Beyond Tax Reporting

Find out more, contact us today

[Click here](#)

[www.erp-recycling.org/uk/](http://www.erp-recycling.org/uk/)



## 15 | Events & workshop diary



### RECOUP Plastics Resource and Recycling Conference | Kings Gate Conference Centre, Peterborough | 29th September

This event is unique in its ability to draw together stakeholders, NGOs, Local and National Government bodies, and companies with business interests to network and share best practice.

Visit the event website [here](#):

### LARAC Conference Celebration Awards 2022 | The Hilton Metropole, Birmingham | 5th – 6th October

This year's LARAC Conference and Celebration Awards cover interesting panel debates, external keynote speakers, case studies, and discussions.

Visit event website [here](#).



### WEEE Conference 2022 | Wellcome Collection, London | 18th October

Join us at the WEEE Conference for a detailed discussion on the present and future of the UK's WEEE sector. With various opportunities to network and join table discussions this year's event is not one to miss.

Visit event website [here](#).

### Environmental Services Association (ESA) Conference London | 19th October

Hear from expert speakers on the impacts of upcoming changes and join in with a facilitated live round table and dedicated workshops that highlight the impacts and differences we can make.

Visit event website [here](#).



### ERP WORKSHOPS 2022

Our workshops provide detailed training for our members about the Regulations and how to apply them in your business.

They are **FREE** to attend and members give very positive feedback about their helpfulness.

For 2023 we plan a combination of online and face-to-face events.

Planned events include:

- **Packaging**  
EVENT in London (Barley Mow Centre)
- **WEEE & Batteries**  
Event in London (Barley Mow Centre)

Get in touch to book a **FREE** 2022 workshop with us.

[ukcompliance@erp-recycling.org](mailto:ukcompliance@erp-recycling.org)





## 16 | ERP's EPR glossary

<b>AATF</b> Approved Authorised Treatment Facility (for WEEE)	and NIEA)	<b>PPT</b> Plastic Packaging Tax
<b>ABE</b> Approved Battery Exporter	<b>EEA</b> European Environment Agency	<b>PRN</b> Packaging Waste Recovery Note
<b>ABTO</b> Approved Battery Treatment Operator	<b>EFW</b> Energy from Waste	<b>PRO</b> Producer Responsibility Organisation
<b>AE</b> Accredited Exporter (for Packaging)	<b>ELV</b> End of Life Vehicles	<b>PS</b> Polystyrene
<b>AR</b> Accredited Reprocessor (for Packaging)	<b>EMS</b> Environmental Management System	<b>PVC</b> Polyvinyl chloride
<b>ATF</b> Authorised Treatment Facility (for WEEE)	<b>EPR</b> Extended Producer Responsibility	<b>RCV</b> Refuse Collection Vehicle
<b>BFR</b> Brominated Flame Retardants	<b>ESA</b> Environmental Services Association	<b>ROHS</b> Restriction Of Hazardous Substances (in EEE)
<b>CA</b> site Civic Amenity (see also HWRC)	<b>HDPE</b> High Density Polyethylene	<b>SEPA</b> Scottish Environment Protection Agency
<b>CIO</b> Consumer Information Obligation (for Packaging)	<b>HWRC</b> Household Waste Recycling Centre	<b>WAC</b> Waste Acceptance Criteria
<b>CIWM</b> Chartered Institution of Wastes Management	<b>LA</b> Local Authority	<b>WBA</b> Waste Batteries and Accumulators
<b>CSR</b> Corporate Social Responsibility	<b>LARAC</b> Local Authority Recycling Advisory Committee	<b>WCA</b> Waste Collection Authority
<b>DCF</b> Designated Collection Facility (for WEEE)	<b>MRF</b> Materials Recovery Facility	<b>WDA</b> Waste Disposal Authority
<b>DEFRA</b> Department for Environment, Food and Rural Affairs	<b>MSW</b> Municipal Solid Waste	<b>WEEE</b> Waste Electrical and Electronic Equipment
<b>DRS</b> Deposit Return Scheme	<b>NIEA</b> Northern Ireland Environment Agency	<b>WFD</b> Waste Framework Directive
<b>DOENI</b> Department for the Environment Northern Ireland	<b>NPWD</b> National Packaging Waste Database (Batteries & Packaging)	<b>WRAP</b> Waste and Resources Action Programme
<b>DTS</b> Distributor Takeback Scheme (for WEEE)	<b>NRW</b> Natural Resources Wales	
<b>EA</b> Environment Agency (see also SEPA, NRW)	<b>ODS</b> Ozone Depleting Substance	
	<b>PCB</b> Polychlorinated Biphenyl	
	<b>PCB</b> Printed Circuit Board	
	<b>PERN</b> Packaging Waste Export Recovery Note	
	<b>PP</b> Polypropylene	

**WBA Regulations** means The Waste Batteries and Accumulators Regulations 2009 (SI 2009/890);

**WEEE Regulations** means the Waste Electrical and Electronic Equipment Regulations 2013 (SI 2013/3113); and

**Packaging Regulations means** The Producer Responsibility Obligations (Packaging Waste) Regulations 2017 (SI 2007/871)







## 17 | Get in touch

---

**Please get in touch** – we'd love to hear from you!

**For general enquiries:**

Phone: +44 203 142 6452

Email: [uk@erp-recycling.org](mailto:uk@erp-recycling.org)

**For our WEEE, Batteries and Packaging Compliance Schemes:**

Phone: +44 844 2480672

Email: [ukcompliance@erp-recycling.org](mailto:ukcompliance@erp-recycling.org)

**For Data Services:**

Phone: +44 844 2480672

Email: [ukdataservices@erp-recycling.org](mailto:ukdataservices@erp-recycling.org)

**For International Compliance:**

Contact: Rupert Foxall, EU Services Manager Call: +44 (0) 7825 119437

Email: [rupert.foxall@erp-recycling.org](mailto:rupert.foxall@erp-recycling.org)

## Our services

**WEEE Compliance:**

Simplifying the recycling of waste electrical and electronic equipment

Visit our webpage [here](#)

**Batteries Compliance:**

Simplifying the recycling of portable batteries

Visit our webpage [here](#)

**Packaging Compliance:**

Simplifying the recycling of packaging

Visit our webpage [here](#)

**Data Services:**

Simplifying your data and submissions

Visit our webpage [here](#)

**Plastic Packaging Tax:**

New tax on plastic packaging in the UK - April 2022

Visit our webpage [here](#)

