

Q2 Newsletter | June 2022

Features

Contents



03 | Message from our Managing Director

EPR for packaging is on its way – let ERP be your guide!

Change can be daunting - and the extent of changes set out by government and timetabled to start in 2024 will impact all producers currently registered (turnover above £2m and 50 tonnes of packaging handled) – as well as thousands more who will need to register and submit data as small producers (turnover between £1m and £2m and between 25 and 50 tonnes of packaging handled).

As specialists in producer compliance, ERP is perfectly placed to support companies through these changes. Worth highlighting are:

ERP's Account Managers – each compliance scheme member and data service customer has a named account manager - your first point of contact for day-to-day queries. We have been expanding our teams to ensure we can provide the support required.

ERP's Data Services – experts in data collection and calculation for EPR regulations - our team has over 20 years' experience supporting companies with compliance data. The team use a specialist database which we have been adapting to ensure it will meet the requirements of the new regulations – and we have been collecting data in the more detailed aspects required for several years.

ERP's Member workshops – face to face and virtual sessions will help you and your colleagues understand the new EPR Regulations and how to implement them in your business. We will be holding extra sessions throughout 2023 to support.

Behind the scenes at ERP – changes for you mean changes for us too. Prodas - our online reporting portal - will be updated to allow members to report data in the new forms required and we will be updating our internal documents and processes. Schemes will need to reapply for approval to operate as a packaging scheme under the new rules.

Externally - there remains much detail to finalise! ERP will be scrutinising the legislation, participating in stakeholder forums and other events to ensure the rules, guidance and systems being developed by government and the scheme administrator are as clear and simple as possible for the producers who will need to use them. We have already volunteered to test systems with Defra – and there will doubtless be plenty of other contributions we can make to support a smooth transition to the new regime in 2024.

It's going to be a busy couple of years ahead for us all – but for EPR, just think ERP!



GREEN ALLEY AWARD: THE STAGE FOR CIRCULAR ECONOMY STARTUPS

In order to connect like-minded people and help startups take their next step, in 2014 Landbell Group has established **Europe's first startup prize for the Circular Economy.**

The **Green Alley Award** offers a unique chance to network – and the most-promising startup takes home a **prize money of 25.000 €.**

[See who can apply here](#)

Green
Alley
Award





04 | Member news



Data Rounds - WEEE & Battery

Q2 2022 B2C EEE and battery weight data will be due for reporting very soon. Please can all Members submit their data through the ERP portal no later than 15th July 2022.

We would like to kindly ask Members to:

- Ensure that all EEE and batteries made available to the UK market is reported in the relevant reporting periods (see table below);
- Have submissions approved by a legal signatory of the company or delegated authority who has prior written consent for 2022, and
- Account for any fluctuations in data by including a brief explanation within the data submission (if prompted when inputting the data). Please note that comparisons are made against the data from the same period of the previous year.

Packaging – 2022 Initial Registrations Completed

We are very pleased to confirm that we have completed the 2022 registrations for our packaging members. Thank you to all our Packaging Members who have supported us in submitting their 2022 packaging submissions already.

Members should have now received copies of their 2022 registration certificates as confirmation of this.

If you have any questions regarding your 2022 registration, please do get in touch with your Account Manager.

Reporting Periods	Reporting Deadlines
Q1: 1st January to 31st March	Thursday 15th April 2021
Q2: 1st April to 30th June	Thursday 15th July 2021
Q3: 1st July to 30th September	Friday 15th October 2021
Q4: 1st October to 31st October	Friday 14th January 2022
2021 B2B EEE: 1st Jan to 31st December	Friday 14th January 2022





05 | Member news



Currys launches new e-waste recycling scheme

UK technology retailer Currys has announced a new 'Long Live Your Tech' commitment to help tackle e-waste by educating and supporting consumers to make more informed choices when buying and disposing of tech.

According to Currys, the UK is facing an e-waste perfect storm as reliance on tech grows and the nation's e-waste problem booms. By raising awareness of the issue, Currys aim to encourage the public to not only consider the sustainability credentials of any new or upgraded purchases but also contemplate how they dispose of old electronics.

Research shows UK homes are currently stockpiling an estimated 527 million unwanted electrical items, which if recycled would cut as much CO2 as taking 1.3 million cars off the road.

The most hoarded tech items are mobile phones (54%), cameras (49%), speakers and headphones (40%).

Packaging PRN Market Update for Q2 2022

We continue to provide our quarterly PRN market updates for our packaging members. The update for Q2 2022 was issued recently and we hope this provides useful information in order to better understand the PRN market.

If any packaging members have not received our recent market update, or would like to discuss PRNs in more detail, please contact your Account Manager, or email ukcompliance@erp-recycling.org.

2022 ERP Member Audits underway

ERP has now begun contacting members to book in audits for WEEE, Batteries, and Packaging in 2022. Our audit schedule is based on the date of the previous ERP audit, whether you are a new customer, or other reasons that might make an audit beneficial to your business.

Our audit programme is part of our commitment as a scheme and exists to support members by ensuring data is being submitted accurately, and obligations are being met. It also provides a great opportunity to get to know our members better and to provide bespoke advice and guidance on best practices.

We plan to undertake the majority of audits via online calls, however, face to face audits and site visits can also be selected as appropriate.





06 | Industry news



Waste Crime

Sir James Bevan, chief executive at the Environment Agency, said:

“Waste crime causes harm to people and places, and it is on the rise. Therefore we have created a robust new strategy that is intelligence-led, collaborative and high-tech, focusing on combating the worst criminals. We now share intelligence on criminals with our partners, resulting in more than 2,500 illegal waste sites being shut down permanently in the last three years.”

“This is not an easy fight – but with the support of our partners we are determined to keep one step ahead of the criminals, shut them out of the system and move us towards an economy in which there is no space for waste crime.”

More information can be found [here](#).



WEEE Collection and Recycling of Heat Pump Tumble Dryers, Microwaves, Fans and Heaters

ERP is a member of the ICER group (Industry Council for Electronic Equipment Recycling), and in early February 2022, we attended a meeting to follow up on the recycling routes for certain types of WEEE.

Due to concerns regarding the presence of Persistent Organic Pollutants (POPs) in items such as microwaves, heaters, and fans, they need to be sent for recycling with Small Mixed WEEE [SMW] rather than Large Domestic Appliances [LDA]. The potential POPs contents in items like these mean that they must be classed as Hazardous Waste and go into a treatment plant that removes the plastics for further separation into ‘good’ and ‘bad’. ‘Good’ plastic can re-enter the recycling chain and be used to make new products, but we must ensure that ‘bad’ plastics - which may contain

POPs - get destroyed, usually through high-temperature incineration.

Recycling plants that treat SMW must grade their plastic outputs into these two categories, either in-house or via downstream operators who can do so. If items such as microwaves, fans and heaters were treated in their original classification as Large Domestic Appliances, the recycling processes would not capture the plastics as effectively. LDA is classed as a non-hazardous stream and must now ONLY include washing machines, ‘traditional’ tumble dryers, cookers and dishwashers – these items have been tested and found to not contain POPs and/or below limit values of concern.

The other product type of concern is Heat Pump Tumble Dryers. These products are a relatively new type and so are only just starting to arise in waste streams. Inside the appliances are heat exchange systems – and these contain up to 4 times the refrigerants of a standard domestic fridge.





07 | Industry news

As a result, Heat Pump Tumble Dryers need to be collected and recycled in the 'Cooling' WEEE stream rather than with other LDA. This also applies to other items such as air-source heat pumps (central heating units), air conditioners, dehumidifiers, water coolers and mini-fridges, which are sometimes misclassified as SMW or LDA.

At site level, the staff need to ensure these items are separated from LDA, which was in some cases quite a change from what they've been used to. ERP have been working with our local authority and waste management partners to raise awareness of these changing requirements and to support site staff in implementing them.

Whilst diverting items like microwaves, fans and heaters from the LDA stream is straightforward, site staff do find it challenging to identify Heat Pump Tumble Dryers from 'traditional' Tumble Dryers. This is because, whilst they are labelled with information to state they contain refrigerants, this is generally on the back of the units. When a site is dealing with large quantities, it is difficult to read the back of every tumble dryer that comes through the site. ICER have provided some very welcome guidance on identification.

We are pleased to report that these changes seem to be going well - ERP really appreciates our local authority, retail and supply chain partners' help in ensuring this segregation continues.



Update from Landbell Group

Last month, we were glad to be travelling and meeting people at events once again. We particularly enjoyed events recognising the pioneers and top achievers who are boosting the circular economy and contributing to a sustainable future.

Green Alley Award 2022

Landbell's Green Alley Awards 2022 took place in Berlin. German start-up Voltfang was the winner with an innovative focus on Reuse and Batteries. Read more [here](#).

ERP UK sponsors the Circular Economy Success award at the Awards for Excellence in Recycling and Waste Management. The category also had a significant focus on reuse and was won by The Renew Hub – reuse on an industrial scale by, SUEZ recycling and recovery UK. Read more [here](#).



Why are we building a platform for EPR worldwide?

Landbell Group publishes its annual performance report for 2021.

"Growth is positive, but not if it drains our resources further or produces greater harm..."

CEO Jan Patrick Schulz introduces Landbell Group's annual performance report, which was published in April. Read more [here](#).

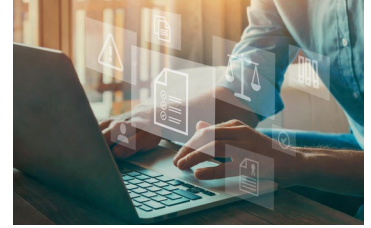
Big changes for producers in the UK

The latest on EPR and modulated fees for packaging – plus new WEEE targets. Read more [here](#).

Landbell Group company, H2 Compliance sponsors the Pharmaceutical Supplier of the Year award. Read more [here](#).



08 | Compliance data



WEEE

The latest data (Q4 2021 UK national data from the EA)

Volumes of EEE placed on the market (POM)

The headline total indicates the highest total Q1 POM tonnage since records began. However, the EA have noted “We have identified a significant increase in category 7 in EEE place on the market. This is due to a submission error and will be resolved soon.” This is obvious in the table below:

	Category	UK B2C EEE placed on the UK Market (tonnes)	Variance (Q1 2022 vs Q1 2021)	% Variance
1	Large Household Appliances	152,787	-12,913	-8%
2	Small Household Appliances	42,302	-3,995	-9%
3	IT and Telcomms Equipment	17,883	-4,396	-25%
4	Consumer Equipment	7,465	-1,332	-18%
5	Lighting Equipment	14,187	-1,429	-10%
6	Electrical and Electronic Tools	20,479	-3,507	-17%
7	Toys Leisure and Sports	51,372	34,270	67%
8	Medical Devices	1,278	-103	-8%
9	Monitor and Control Instruments	5,887	-382	-6%
10	Automatic Dispensers	38	-10	-27%
11	Display Equipment	27,315	5,682	21%
12	Cooling	54,102	-8,345	-15%
13	Gas Discharge Lamps	1,543	-432	-28%
14	Photovoltaic Panels	16,335	5,223	32%
	Total	412,975	8,330	2%



WEEE & Batteries Workshop (London)

Friday 16th September,
10am until 3.30pm

WEEE & Battery regulations
Your obligations as a Producer
Your current obligations as a distributor
Updates on any consultations
Information required to be communicated to customers
Data collection and reporting

Limited availability, book today



09 | Compliance data

Volumes of EEE placed on the market (POM) cont.

Without this, it appears that only Display and PV panels recorded an increase in POM compared to the same period in 2021 (which you may recall from our last newsletter was a record year for EEE volumes across most categories).

Volumes of WEEE collected (see table opposite)

Q1 data indicates a similar volume of WEEE collected when compared to the same period last year. At the collection stream level, there were increases in display, small mixed WEEE and lamps but decreases in LDA and cooling.

Outlook for the compliance year

Looking at the Q1 volumes against the targets for 2022 shows most streams are reasonably on track – but with display volumes ahead.

Category	Q1 2022		
	UK B2C WEEE Collected - (tonnes)	Variance (Q1 2022 vs Q1 2021)	% Variance
LDA	45,407	-2,228	-5%
Cooling	31,624	-1,560	-5%
Display	10,558	691	7%
Cats 2-10 SMW	31,198	2,315	7%
Lamps	1,033	111	11%
PV	50	-13	-26%
TOTAL	119,870	-684	-1%

Category	Q1 2022 UK WEEE collected	2022 DEFRA targets	Progress to targets %
LDA	45,407	183,867	25%
Cooling	31,624	146,275	22%
Display	10,558	39,705	27%
Cats 2-10 SMW	31,198	137,130	23%
Lamps	1,033	4,145	25%
PVP	50	254	-20%
TOTAL	119,870	511,376	23%





10 | Compliance data

Batteries

The latest data (Q1 2022 UK national data from the EA) - Volumes of Portable Batteries placed on the market (POM)

Q1 saw a slightly lower (500 tonnes, -5%) volume of portable batteries placed on the market.

	Q1 2022	Variance
Lead Acid	286	-2%
NiCd	54	22%
Others	8,668	-6%
TOTAL	9,008	-5%

Volumes of waste batteries collected

The data shows the highest ever volume of batteries collected in Q1, with a particular increase in ‘other’ batteries.

	Q1 2022	Variance
Lead Acid	3,946	6%
NiCd	137	51%
Others	1,540	42%
TOTAL	5,624	15%

Outlook for the compliance year

Based on the Q1 2022 data, the UK collection rate for 2022 (to date) is 18.23%, which is 40.52% progress towards to the 2022 target (45%).

Plastic Packaging Tax

Building on our 25 years’ experience in data collection and reporting for the Packaging Waste Regulations, ERP have developed a new service for businesses affected by this new tax.

The tax came into force on 1st April 2022 and will be charged at a rate of £200 per tonne for plastic packaging produced in or imported into the UK that does not contain at least 30% recycled plastic.

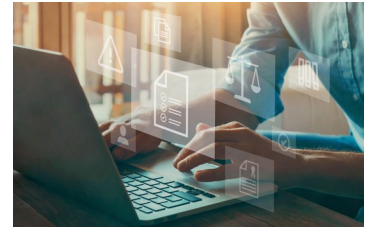
Account managers have been in touch with customers we believe will be impacted by the tax to make sure they are aware of it – and to discuss the service and reporting requirements in more detail.

Businesses should also carry out their own due diligence checks in respect of Plastic Packaging Tax if they either manufacture plastic packaging components or import plastic packaging components.

If you have any questions about the plastic packaging tax, and how it will affect your company, please contact your account manager directly or the Data Services team at: ukdataservices@erp-recycling.org

For the latest HMRC guidance on the tax please click [here](#).



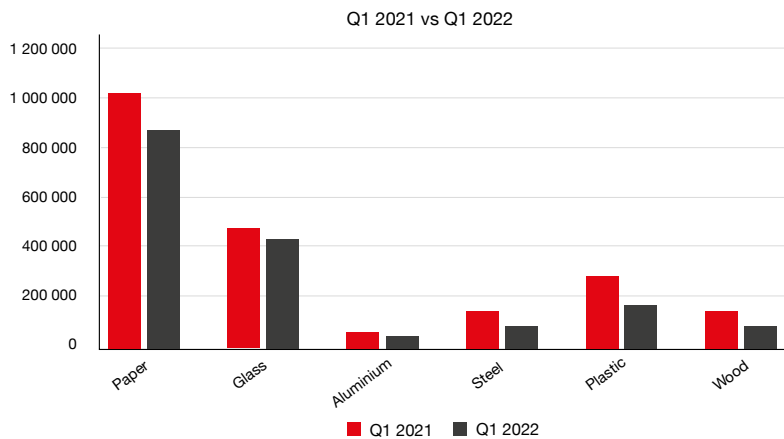


11 | Compliance data

Packaging

In the last issue of The Circular we looked at how the UK achieved compliance in 2021. We commented that we met the recycling and recovery targets in all materials, however, that we had to use carry over for glass remelt and plastic. This meant that we started the year with a bit less volume in both materials to put towards our 2022 compliance need.

Comparing Quarter 1, 2022 with Quarter 1, 2021, we see a downwards trend for paper and plastic in particular.



Since then, the Environment Agency issued PRN data for the Quarter 1 of 2022 and it shows that we had a slow start to the year, being behind the curve recycling the volumes we are likely to need to comply.

This slow start to the year, increased recycling targets, and the bite already taken out of the carry over of the eligible 2022 volume suggest that the PRN market will be tight this year.

We are still awaiting final confirmation

of the UK's overall obligation for the year. Data published earlier last month did not include all obligated businesses. It is expected that there will be further adjustments to the PRN market once information becomes available and we can plot 2022 demand against anticipated recycling levels.

In the meantime, PRN prices continue to trend upwards to stimulate more material to be pulled through the recycling chain in order to have sufficient PRNs available for 2022 compliance.



ERP's DataView Platform Going Beyond Tax Reporting

Find out more, contact us today

[Click here](#)

www.erp-recycling.org/uk/





12 | Featured article:



A summary of PRN consultation response

A consultation on changed reporting requirements for packaging waste recycling notes (PRNs) has been launched by the Department for Environment, Food and Rural Affairs (Defra).

In its EPR consultation response published on 26 March, Defra set recycling targets up to 2030 and covered materials in-scope of Extended Producer Responsibility (EPR). The PRN system consultation was issued alongside the EPR document.

While wider EPR measures should address many of the issues identified with the current producer responsibility arrangements, there are several minor reforms that may help to improve the functioning of

the PRN/PERN market in the short term.

Defra will be focusing on the following areas for reform:

- Reporting requirements on the sales of PRNs/PERNs
- Reporting requirements on how the revenue from PRN/PERN sales is used
- Timeframes for the trading of PRNs/PERNs
- The introduction of a technical competence test for compliance scheme operators and accredited reproducers/exporters
- The interface with the introduction of a Deposit Return System (DRS)
- The introduction of a compliance fee for producers that fail to meet their obligations

Read the PDF summary of consultation responses and Government response [here](#).



Packaging Workshop (London)

Thursday 15th September,
10am until 3.30pm

Your obligations as a Producer
Updates on any consultations
Packaging EPR reforms and the impact
this will have on you and your business
Information required to be communicated
to customers
Data collection and reporting

Limited availability, book today



13 | Meet a team member: Geeta Modhvadia



make sure I have a good knowledge of how ERP works.

Q What motivates you in your role?

A Coming from a very different type of industry there is always going to be a lot to learn and understand in a new company. I'm excited and motivated to progress within the role, providing the best possible service and journey for our customers.

Q What do you enjoy doing outside work?

A I spend my off days with friends and family, going for meals and planning activities. I love a good road trip somewhere new to explore and see what other towns have to offer.

Q Your favourite music genre/ band(s)?

A I listen to R&B music. I don't have a favourite band or artist. I like any music with a good beat and rhythm to put me in a good mood.

Q Favourite holiday destinations?

A Dubai is one of my favourite places so far. I also like Egypt and India – the cultural differences fascinate me and there's so much to explore.

Q How long have you been with ERP UK?

A I joined ERP at the start of May 2022

Q Tell us about your experience before joining the ERP team?

A My background is in large energy and home services provider. I spent just over 14 years with the company before deciding on a change and looking for a new challenge.

Q What does a typical day look like for you?

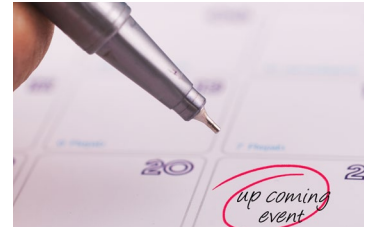
A At this stage I am still As I only joined ERP a couple of months ago, I'm still in the training stage and taking in all the information to

For all our latest
**NEWS
EVENTS
WORKSHOPS**

Follow us on
LINKEDIN
Click here

www.erp-recycling.org/uk/





14 | Events & workshop diary



NATIONAL CIVIC AMENITY SITE CONFERENCE (NCAS) 7th July – Solihull

The landscape for those involved in running a household waste and recycling centre has changed somewhat from just a year ago. This conference will explore the latest guidance and advice for anyone connected to managing or operating a civic amenity site.

Visit event website [here](#).

LARAC WALES CONFERENCE 12th July – Wales

We will take an in-depth look at the key issues around running an efficient and effective local authority waste and recycling service.

Visit event website [here](#).



RWM AND LETSRECYCLE Live Come Together 14th & 15th September – NEC Birmingham

An opportunity to see live demonstrations of vehicles and machinery, engage with expert speakers, participate in a range of exclusive free to attend networking events, and enjoy the buzz and festival atmosphere of street food market and live music.

Visit event website [here](#).

2022 COOLING INDUSTRY AWARDS 22nd September – Grosvenor House Ballroom, London

Join us for the biggest and most prestigious awards in the refrigeration and air conditioning sector.

Visit event website [here](#).



ERP WORKSHOPS 2022

Our workshops provide detailed training for our members about the Regulations and how to apply them in your business.

They are **FREE** to attend and members give very positive feedback about their helpfulness.

For 2022 we plan a combination of online and face-to-face events.

Planned events include:

- **Packaging 15th Sept**
EVENT in London (Barley Mow Centre)
- **WEEE & Batteries 16th Sept**
Event in London (Barley Mow Centre)

Get in touch to book a **FREE** 2022 workshop with us.

ukcompliance@erp-recycling.org





15 | ERP's EPR glossary

AATF Approved Authorised Treatment Facility (for WEEE)	and NIEA)	PPT Plastic Packaging Tax
ABE Approved Battery Exporter	EEA European Environment Agency	PRN Packaging Waste Recovery Note
ABTO Approved Battery Treatment Operator	EFW Energy from Waste	PRO Producer Responsibility Organisation
AE Accredited Exporter (for Packaging)	ELV End of Life Vehicles	PS Polystyrene
AR Accredited Reprocessor (for Packaging)	EMS Environmental Management System	PVC Polyvinyl chloride
ATF Authorised Treatment Facility (for WEEE)	EPR Extended Producer Responsibility	RCV Refuse Collection Vehicle
BFR Brominated Flame Retardants	ESA Environmental Services Association	ROHS Restriction Of Hazardous Substances (in EEE)
CA site Civic Amenity (see also HWRC)	HDPE High Density Polyethylene	SEPA Scottish Environment Protection Agency
CIO Consumer Information Obligation (for Packaging)	HWRC Household Waste Recycling Centre	WAC Waste Acceptance Criteria
CIWM Chartered Institution of Wastes Management	LA Local Authority	WBA Waste Batteries and Accumulators
CSR Corporate Social Responsibility	LARAC Local Authority Recycling Advisory Committee	WCA Waste Collection Authority
DCF Designated Collection Facility (for WEEE)	MRF Materials Recovery Facility	WDA Waste Disposal Authority
DEFRA Department for Environment, Food and Rural Affairs	MSW Municipal Solid Waste	WEEE Waste Electrical and Electronic Equipment
DRS Deposit Return Scheme	NIEA Northern Ireland Environment Agency	WFD Waste Framework Directive
DOENI Department for the Environment Northern Ireland	NPWD National Packaging Waste Database (Batteries & Packaging)	WRAP Waste and Resources Action Programme
DTS Distributor Takeback Scheme (for WEEE)	NRW Natural Resources Wales	
EA Environment Agency (see also SEPA, NRW	ODS Ozone Depleting Substance	
	PCB Polychlorinated Biphenyl	
	PCB Printed Circuit Board	
	PERN Packaging Waste Export Recovery Note	
	PP Polypropylene	

WBA Regulations means The Waste Batteries and Accumulators Regulations 2009 (SI 2009/890);

WEEE Regulations means the Waste Electrical and Electronic Equipment Regulations 2013 (SI 2013/3113); and

Packaging Regulations means The Producer Responsibility Obligations (Packaging Waste) Regulations 2017 (SI 2007/871)





16 | Get in touch

Please get in touch – we'd love to hear from you!

For general enquiries:

Phone: +44 203 142 6452

Email: uk@erp-recycling.org

For our WEEE, Batteries and Packaging Compliance Schemes:

Phone: +44 844 2480672

Email: ukcompliance@erp-recycling.org

For Data Services:

Phone: +44 844 2480672

Email: ukdataservices@erp-recycling.org

For International Compliance:

Contact: Rupert Foxall, EU Services Manager Call: +44 (0) 7825 119437

Email: rupert.foxall@erp-recycling.org

Our services

WEEE Compliance:

Simplifying the recycling of waste electrical and electronic equipment

Visit our webpage [here](#)

Batteries Compliance:

Simplifying the recycling of portable batteries

Visit our webpage [here](#)

Packaging Compliance:

Simplifying the recycling of packaging

Visit our webpage [here](#)

Data Services:

Simplifying your data and submissions

Visit our webpage [here](#)

Plastic Packaging Tax:

New tax on plastic packaging in the UK - April 2022

Visit our webpage [here](#)

